

These are the notes referred to on the following official copy

The electronic official copy of the title plan follows this message.

Please note that this is the only official copy we will issue. We will not issue a paper official copy.

This official copy was delivered electronically and when printed will not be to scale. You can obtain a paper official copy by ordering one from HM Land Registry.

This official copy is issued on 15 August 2022 shows the state of this title plan on 15 August 2022 at 12:04:50. It is admissible in evidence to the same extent as the original (s.67 Land Registration Act 2002). This title plan shows the general position, not the exact line, of the boundaries. It may be subject to distortions in scale. Measurements scaled from this plan may not match measurements between the same points on the ground. This title is dealt with by the HM Land Registry, Croydon Office .

© Crown copyright. Produced by HM Land Registry. Reproduction in whole or in part is prohibited without the prior written permission of Ordnance Survey. Licence Number 100026316.

Land Registry.

~~(Land Transfer Acts 1875 & 1897)~~

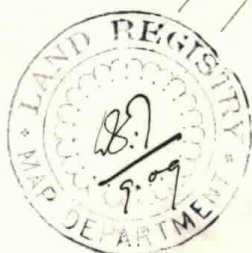
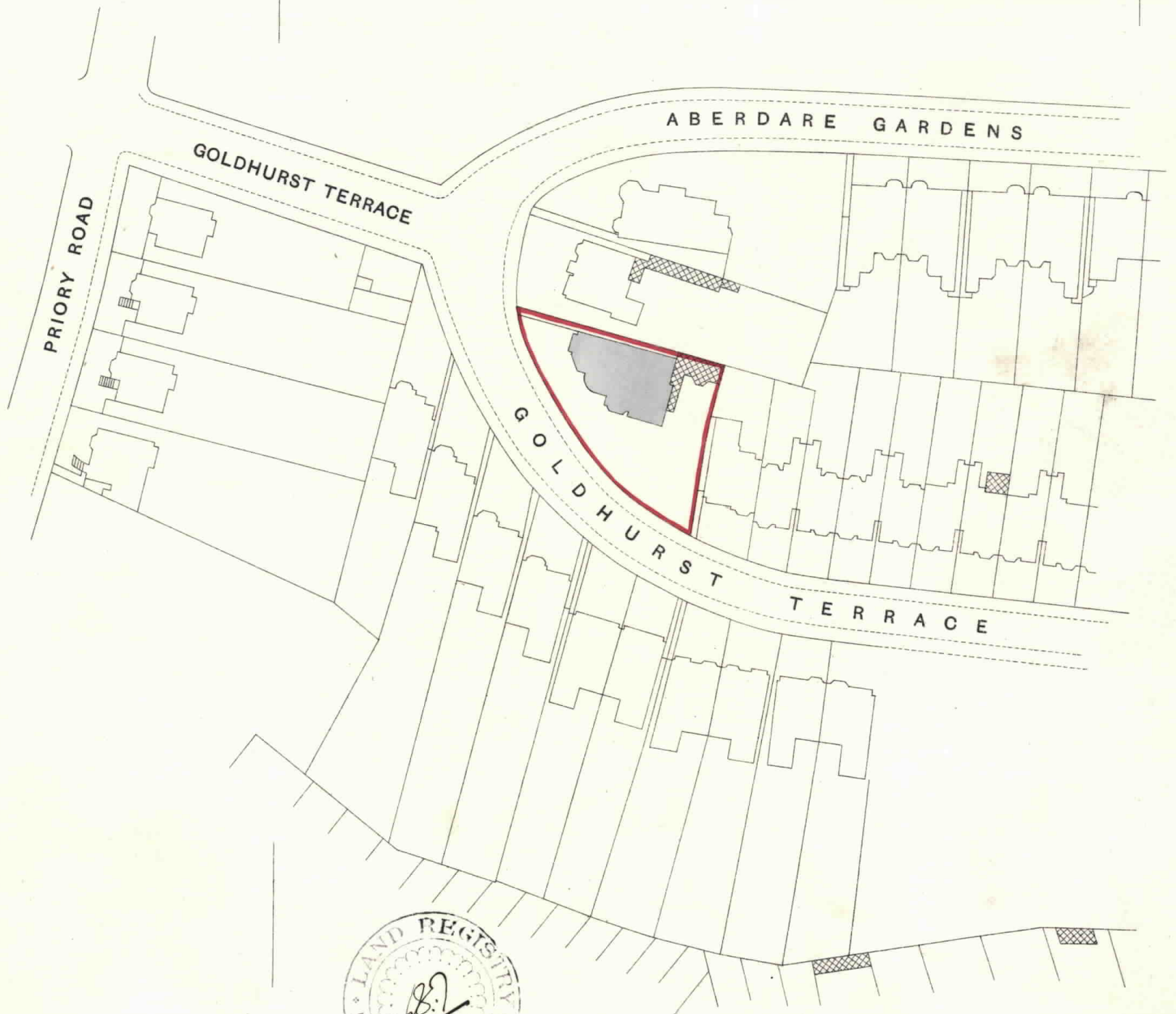
DISTRICT—LONDON

PARISH _____ ^{GREATER LONDON} ~~HAMPSTEAD~~ ^{BOROUGH OF CAMDEN} _____

Title N^o 142737

Ordnance Survey: LONDON Sheet VI. 19.
(Edition 1894-96.) (Revised)
Scale 88 Feet to One Inch.

VI. 18. VI. 19.



J.C. $\frac{2769}{1\frac{1}{2} - 1\frac{1}{2}}$ E.A.

A.

This is the filed Plan No.

142737

A.D.B. 9-09.

W B & L (187ss)—34832—5000-6-5
46987—10000-5-6